

# secession

Vereinigung bildender KünstlerInnen Wiener Secession  
Friedrichstraße 12, A-1010 Wien  
T. +43-1-587 53 07, F. +43-1-587 53 07-34  
office@secession.at, www.secession.at

## Informations to the premises of the Secession

The Secession provides an exclusive framework for events such as receptions, cocktails, dinners, press conferences, lectures, presentations or symposiums due to its timeless elegant and multifaceted rooms.

The "Hauptraum" of the Secession is the first "white cube" of art history. The often as cathedral like described aura of the room grants each event a festive note. The openness of the layout allows variable adjustments- from informative or intimate meetings up to big dimensioned parties.

We are happy to recommend an adequate catering or contact to firms for sound and technics and to assist any time regarding inspection or further advice.

Prices on request

### contact

institution	Vereinigung bildender KünstlerInnen Wiener Secession
responsible	Kathrin Schweizer
telefonnumber	01 – 587 53 07 11
email	office@secession.at

Maps and images are available under [www.secession.at/maps](http://www.secession.at/maps).

**secession**

Vereinigung bildender KünstlerInnen Wiener Secession  
Friedrichstraße 12, A-1010 Wien  
T. +43-1-587 53 07, F. +43-1-587 53 07-34  
office@secession.at, www.secession.at

**General appointment**

wardrobe:	2 wardrobes á 200 clothes-hangers
chair/tables:	80 stackable chairs, tables existent
electricity/ connection for power supply:	available
technical equipment:	beamer, sound system (small-sized)

**HAUPTRAUM (main exhibition hall)**

dimension:	604 m <sup>2</sup>
suitability for:	symposia, dinner, presentations, etc.
capacity:	420 Pax
specials:	- room very variable to use - 2 side aisles - glas roof - daylight
floor:	stone floor
lightening:	available
entrances:	4

**secession**

Vereinigung bildender KünstlerInnen Wiener Secession

Friedrichstraße 12, A-1010 Wien

T. +43-1-587 53 07, F. +43-1-587 53 07-34

office@secession.at, www.secession.at



main exhibition hall of the Secession



main exhibition hall of the Secession

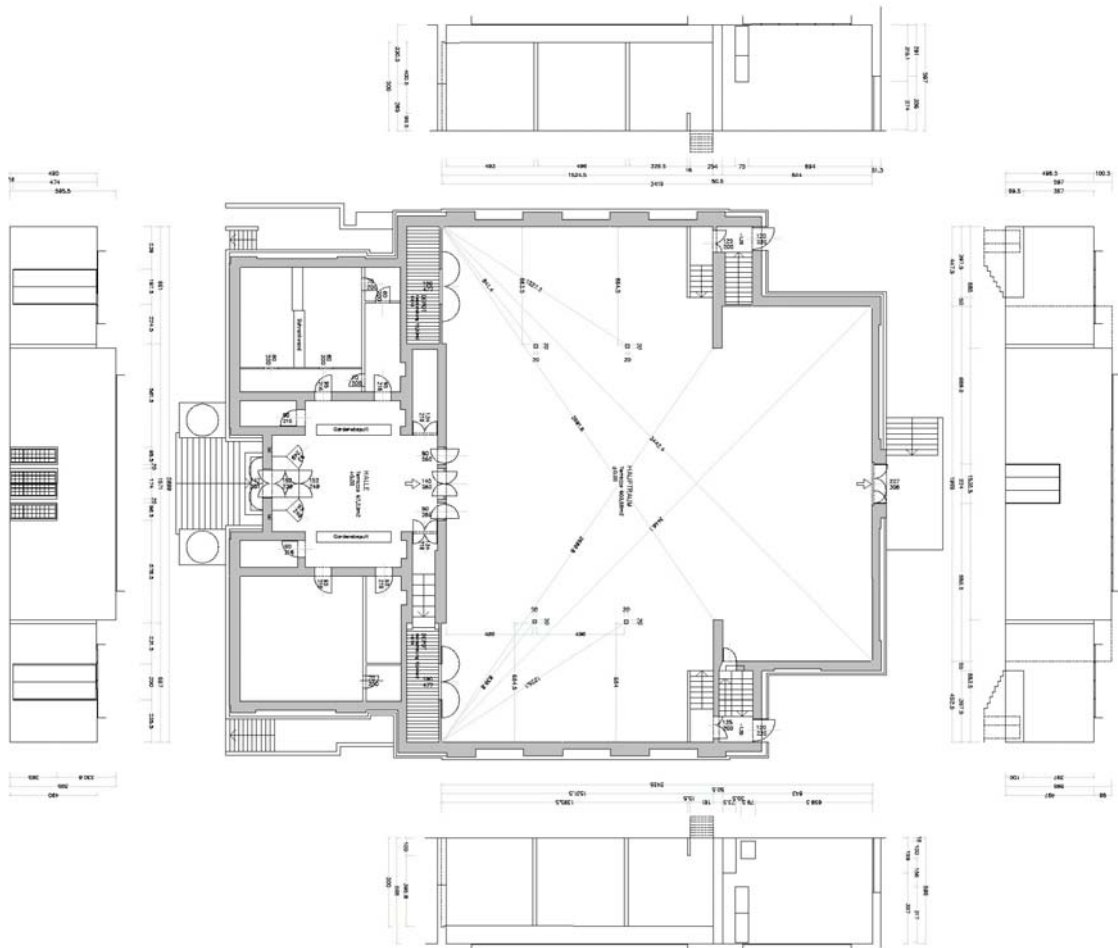
## secession

Vereinigung bildender KünstlerInnen Wiener Secession

Friedrichstraße 12, A-1010 Wien

T. +43-1-587 53 07, F. +43-1-587 53 07-34

office@secession.at, www.secession.at

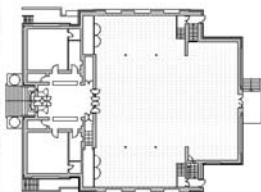


**SECESSION**

Friedrichstraße 12, A-1010 Wien, Telefon +43 1 587 53 07, Fax +43 1 587 53 07 34  
 Grundriss/section: HILFTRISUM EG 1100  
 perspektive: SECESSION HALL, second floor 1:100  
 Grundriss: LINDERPLAN EG 1300  
 SECO 01 01 - Darstellung/plan

VER SACRUM

ARCHITECTS: GABRIELE TRONK & JOSEF LUDWIG RÖNIGGER  
 ARCHITECTURE: SECESSION, 1900-1902  
 PHOTO: +43 1 515 43 80, Fax: +43 1 515 43 79



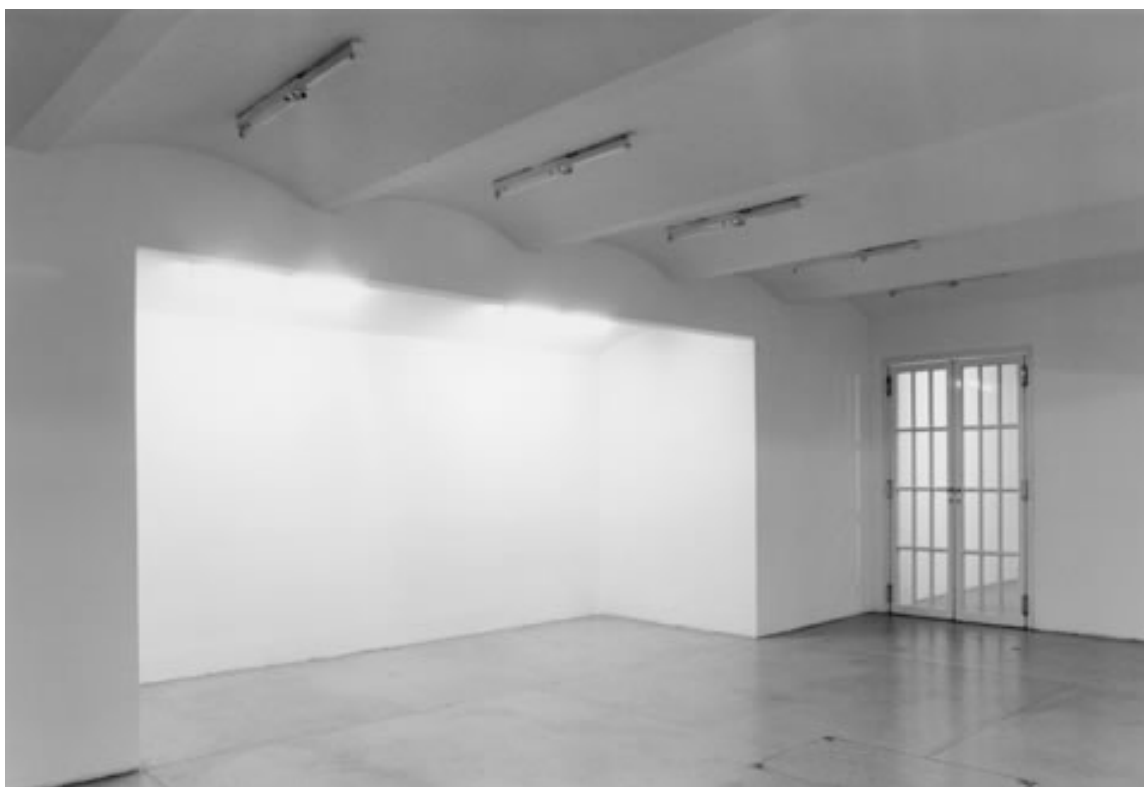
floorplan main exhibition hall, entrance and Ver Sacrum

**secession**

Vereinigung bildender KünstlerInnen Wiener Secession  
Friedrichstraße 12, A-1010 Wien  
T. +43-1-587 53 07, F. +43-1-587 53 07-34  
office@secession.at, www.secession.at

**Galerie (Gallery)**

dimension:	190 m <sup>2</sup>
sutability for:	lectures, presentations, etc.
capacity:	200 Pax
floor:	stone floor
lightening:	available, neon light
entrances:	2



Gallery

## secession

Vereinigung bildender KünstlerInnen Wiener Secession

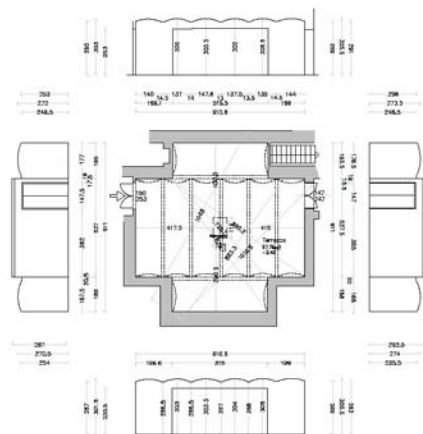
Friedrichstraße 12, A-1010 Wien

T. +43-1-587 53 07, F. +43-1-587 53 07-34

office@secession.at, www.secession.at



Gallery



## SECESSION

Friedrichstraße 12, A-1010 Wien, Telefon +43 1 587 53 07, Fax +43 1 587 53 07 34

Grundriss/Ansichten GALERIE KREUZRAUM UG1 1:100  
perspektivische CROSS ROOM basement 1:100  
Grundriss LAGEPLAN UG1 1:300


8/15 PLAN basement 1:300

SEC 02.01 - Baumaßnahmen

LEUCHTKONZEPTE:

RECHENLEUCHTUNGSWEITE LIGHT

RIPPEN DER GEWÄLDEDECKENHALT

STICHBOSSWOOD\* 

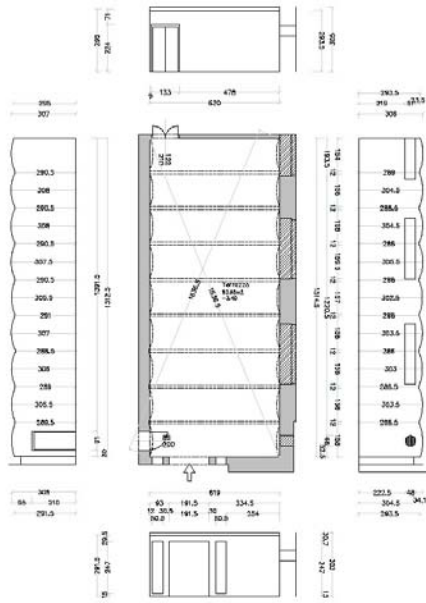
Arch. Dipl.-Ing. Gabriele Irlmaier & Dipl.-Ing. Ludwig Rohringer  
Rothauerstraße 33/39, A-1090 Wien, Telefon +43 1 315 43 80, Fax +43 1 315 43 79

floorplan Gallery „Kreuzraum“



**secession**

Vereinigung bildender KünstlerInnen Wiener Secession  
 Friedrichstraße 12, A-1010 Wien  
 T. +43-1-587 53 07, F. +43-1-587 53 07-34  
 office@secession.at, www.secession.at



**SECESSION**

Friedrichstraße 12, A-1010 Wien, Telefon +43 1 587 53 07, Fax +43 1 587 53 07 34  
 Grundriß/Ansichten GALERIE AUSSTELLUNGSRAUM UG1 1:100  
 plan/Ansichten EXHIBITION HALL basement 1:100  
 Grundriß LAGEPLAN UG1 1:300  
 SITE PLAN basement 1:300  
 SEC 04.01 - Bemessung/Dimensionen

- PUNKTLICHT
- RECHHELEUCHTUNG/WHITE LIGHT
- REPPH/DER SCHWÄRZUNG/SCHATT
- STEIGER/SCHICHT



Arch. Dipl. Ing. Gabriele Kilmia & Dipl. Ing. Ludwig Rohringer  
 Raubauerstraße 33/38, A-1080 Wien, Telefon +43 1 315 43 80, Fax +43 1 315 43 79

Floorplan Gallery long room

## **secession**

Vereinigung bildender KünstlerInnen Wiener Secession  
Friedrichstraße 12, A-1010 Wien  
T. +43-1-587 53 07, F. +43-1-587 53 07-34  
office@secession.at, www.secession.at

## **Entrance and Ver Sacrum-room**

dimension:	49 m2 + 67 m2
sutability for:	cocktails, presentations, press conferenc, lectures
capacity:	40 Pax + 60 Pax
floor:	parquet + stone floor
lightening:	available
entrances:	1 each



Ver Sacrum room (Shop)

**secession**

Vereinigung bildender KünstlerInnen Wiener Secession

Friedrichstraße 12, A-1010 Wien

T. +43-1-587 53 07, F. +43-1-587 53 07-34

office@secession.at, www.secession.at



Ver Sacrum room (Shop)